

NEW PRODUCT



One-stop Home Furniture Solution of Home Cabinet - Baxter-Side Cabinet

Website: [Fenicasa.com](http://Fenicasa.com)

#### FENMICASA

Furniture has created a new stylistic language, a fresh visual and atmospheric approach to interiors. Our intent is to design and execute new projects with surprise, creativity, precision, and vitality. Our passion for products constantly drives us to explore further. The research behind our brand's new collection marks another significant evolutionary step for FENMICASA Furniture, adopting a new decorative code of Italian minimalism. A fresh vision for office spaces is realized through systems that articulate seating and decorative elements. Alternating curves and lines reveal new geometric forms, delivering unexpected solutions for diverse environments.





- **Design Excellence**
  - Fusion of dark wood veneer and matte black metal frame, showcasing sophisticated understated luxury.
- **Superior Craftsmanship**
  - Meticulously crafted with attention to detail, ensuring durability and a flawless finish.
- **Ample Storage**
  - Features multiple cabinets with smooth-closing doors, providing generous space for essentials.
- **Versatile Style**
  - Clean lines and neutral tones complement a wide range of interior design styles.
- **Functional Elegance**
  - Designed as a statement piece that elevates the aesthetic of any room while offering utility.



- **Sculptural Design**
- Fluid, curved silhouette transforms furniture into a work of art, adding dynamic elements to any space.
- **Innovative Storage**
- Unique layered drawer design provides ample storage with a dramatic, unexpected opening mechanism.



- **Premium Materials**
- Crafted from high-gloss dark wood veneer and luxurious marble top, showcasing exceptional quality.
- **Statement Piece**
- Bold, artistic form makes it a captivating focal point, elevating the sophistication of interiors.





- **Vertical Elegance**
  - Tall, slender silhouette maximizes vertical space, ideal for compact interiors or as a statement piece.
- **Efficient Storage**
  - Generous, organized storage within a minimal footprint, perfect for decluttering living spaces.
- **Material Contrast**
  - Combines rich dark wood veneer with smooth light-toned panels for sophisticated visual contrast.
- **Sleek Profile**
  - Generous, organized storage within a minimal footprint, perfect for decluttering living spaces.
- **Functional Design**
  - Designed for both form and function, providing practical storage without compromising style.



- **Superior Craftsmanship**
  - Meticulously crafted with seamless edges and precision joinery for durability and luxury.
- **Elegant Details**
  - Subtle drawer texture and minimalist hardware add a touch of refined elegance.

- **Contemporary Aesthetics**
  - Sleek modern design with clean lines and a sophisticated palette, complementing upscale decor.
- **Practical Storage**
  - Smooth-gliding drawers offer organized storage space to keep bedside essentials tidy.



- **Exquisite Materials**
  - Rich figured wood veneer with high-gloss finish, paired with textured light-toned drawers.



- **Geometric Precision**
- Bold geometric design with clean lines and distinct paneling creates a striking visual statement.
- **Material Harmony**
- Combines rich figured wood veneer with textured light-toned panels for a warm, modern balance.



- **Innovative Lighting**
- Integrated LED lighting adds luxury and functionality, perfect for showcasing decor.
- **Superior Craftsmanship**
- Meticulously crafted with seamless edges and precision joinery, reflecting quality.
- **Optimized Storage**
- Versatile mix of drawers and cabinets maximizes space efficiency in style.



- **Fluid Silhouette**

- Elegant curves and clean lines embody modern sophistication, adding a touch of refinement to any space.

- **Ample Storage**

- Spacious, versatile storage compartments neatly organize tableware, textiles, and media devices.

- **Luxurious Materials**

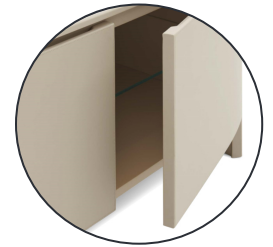
- Premium high-gloss patterned wood veneer paired with light-toned textured cabinet doors creates a luxurious visual and tactile experience.

- **Statement Furniture**

- Not just storage furniture, but a standout focal piece that elevates the aesthetic appeal of any interior.

- **Exquisite Craftsmanship**

- Seamless rounded edges and precise detailing showcase master craftsman-level quality standards.



- **Fluid Minimalism**
- Soft curves and clean lines define a minimalist aesthetic with a warm, approachable character.
- **Sculptural Form**
- Rounded corners and seamless doors create a monolithic form, elevating it to modern art.
- **Versatile Elegance**
- Available in sophisticated finishes to complement a variety of interior styles effortlessly.



**• Organic Minimalism**

- The elegant, circular organic forms bid farewell to rigid geometric lines, bringing tranquility and softness to the modern bedroom.

**• Exquisite Detailing**

- Three smooth-gliding drawers provide ample storage space, ensuring your nighttime routine stays both tidy and stylish.

**• Premium Upholstery**

- Encased in premium soft-touch materials with exquisite finishes, it delivers a luxurious tactile experience and elegant aesthetics.

**• Timeless Appeal**

- A versatile design that is understated and elegant, effortlessly blending into any interior style to become a timeless classic.



- **Space-Saving Design**
  - The unique cylindrical design maximizes space efficiency, making it the perfect choice for compact areas or as a stylish accent piece.
- **Contemporary Aesthetic**
  - A sleek, minimalist design where clean vertical lines embody modern elegance and understated sophistication.
- **Premium Upholstery**
  - Crafted with high-quality, soft-to-the-touch materials, delivering a luxurious tactile experience and harmonious appearance.
- **Versatile Storage**
  - Multiple drawers provide ample, organized storage space, seamlessly blending functionality with distinctive design.
- **Statement Furniture**
  - More than just storage, it's a bold design statement that adds artistic flair and visual interest to any interior.



- **Architectural Statement**
- Bold geometric designs and clean, angular lines create striking architectural pieces for modern homes.



- **Luxurious Materials**
- Exquisite high-gloss wood veneer paired with dark marble countertops creates a luxurious finish with dramatic textures.

- **Artistic Focal Point**
- Not merely furniture, but a true work of art designed to be the visual focal point of any space.

- **Innovative Storage**
- The cleverly designed interior combines drawers and cabinet doors, offering an organized storage solution beneath an artistic exterior.

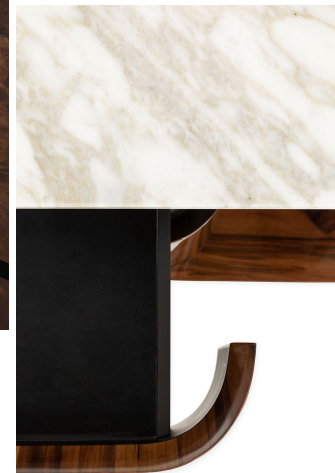




- **Material Fusion**
- The perfect fusion of high-gloss patterned wood veneer and luxurious white marble countertops creates a stunning visual contrast and exquisite feel.

- **Meticulous Craftsmanship**
- Seamless material transitions, precise metal inlay, and flawless curve detailing showcase an uncompromising commitment to detail.

- **Curvilinear Design**
- Smooth, flowing curves and rounded edges soften the cabinet's silhouette, adding elegance and dynamism to modern spaces.





- **Exquisite Material Selection**
- Exquisitely selected high-gloss patterned wood veneer paired with pristine white marble countertops creates an eternal and refined aesthetic.
- **Superior Craftsmanship**
- Seamless edges and precision joining techniques—every detail reflects the highest standards of quality.
- **Functional Elegance**
- The combination of cabinet doors and drawers provides spacious and organized storage, keeping your living space both tidy and stylish.



- **Scandinavian Minimalism**
- Blending clean lines with luxurious materials, it embodies the essence of modern Nordic aesthetics, combining functionality with a touch of opulence.





- **Innovative Gradient Design**
  - Seamless transitions from deep charcoal to light gray create a distinctive, eye-catching visual effect, redefining modern storage aesthetics.
- **Premium Craftsmanship**
  - Featuring premium wood veneer paired with a sturdy metal frame, the surface finish is flawless, combining aesthetic appeal with long-lasting durability.
- **Functional & Stylish**
  - The multi-drawer design offers ample and organized storage space, seamlessly blending avant-garde aesthetics with everyday practicality.





- **Exquisite High-Gloss Finish**
- Stunning high-gloss wood veneer with rich grain patterns, available in select premium timbers for an opulent look.
- **Superior Craftsmanship**
- Meticulously crafted with seamless edges, precise joinery, and a flawless polished finish.

- **Contemporary Silhouette**
- Clean minimalist design with sharp lines and a distinctive recessed top handle for a modern aesthetic.
- **Practical & Elegant Storage**
- Two smooth-gliding drawers provide ample space for bedside essentials, combining function with luxury.

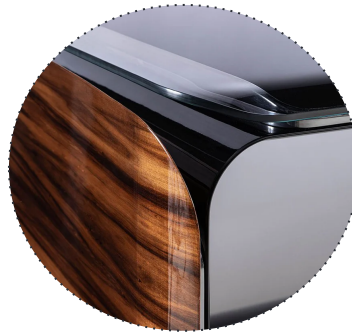




- **Bold Asymmetrical Design**
- A striking asymmetrical silhouette combines open and closed storage to create a dynamic visual focal point.
- **Luxurious Material Fusion**
- Combining glossy black lacquer, premium wood veneer, and metallic decorative glass to create an exquisitely luxurious finish.



- **Exquisite Craftsmanship**
- Seamless edges, precision joints, and flawless polishing embody an uncompromising commitment to detail and quality.
- **Functional & Stylish Storage**
- Combining open shelves with glass-door cabinets, this design delivers a clean, organized, and versatile storage solution.
- **Statement of Modernity**
- A bold declaration of modern design, infusing contemporary interior spaces with distinctive artistic flair and refined elegance.





- **Elegant Textured Design**
  - Features a sophisticated quilted diamond pattern on the front panels, adding tactile luxury to the minimalist form.
- **Material Contrast**
  - Harmoniously combines rich dark wood finish with soft light-toned textured panels for a balanced aesthetic.
- **Subtle Sophistication**
  - Understated design and neutral palette ensure this piece complements a wide range of interior styles.
- **Practical Storage**
  - Offers ample, concealed storage space behind elegant doors, keeping your living area organized.
- **Statement of Refinement**
  - More than just functional, it is a subtle statement of refined taste, perfect for modern living spaces.



- **Pure Minimalism**
- Clean design with soft, rounded edges and neutral palette, embodying modern minimalist aesthetics.
- **Modular Storage Solution**
- Seamlessly integrated drawers offering flexible and ample storage in a compact footprint.
- **Premium Soft-Touch Material**
- Upholstered in high-quality, soft material with a sophisticated matte finish for a luxurious feel.
- **Subtle Contrast Detail**
- Rich dark wood on the top adds warmth and visual interest, elevating the overall design.





- **Modern Quilted Texture Tall Cabinet**
  - Elegant quilted diamond pattern adds tactile luxury and visual depth to the minimalist form.
- **Clean & Compact Design**
  - Features a clean vertical silhouette with rounded edges, perfect for contemporary interiors.
- **Material Harmony**
  - Combines rich textured panels with smooth soft-touch surfaces and subtle metallic accents.
- **Functional & Elegant**
  - Offers ample concealed storage behind textured doors, keeping space organized and refined.



**Cohesive Design**

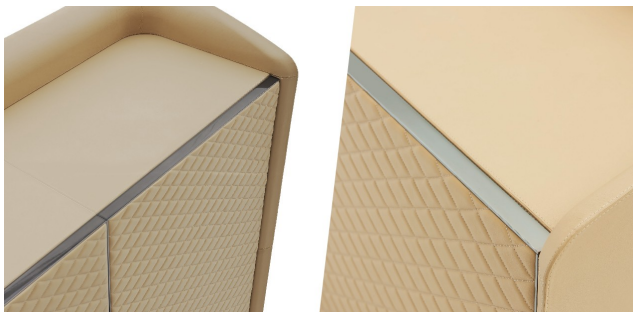
Featuring an elegant diamond quilted texture and harmonious color palette, it creates a refined and coordinated visual appearance.

**Textured Elegance**

Intricate diamond patterns add tactile depth and visual intrigue, elevating minimalist aesthetics with subtle detailing.



- **Premium Craftsmanship**  
Crafted from high-quality soft materials with seamless edges and precise detailing, combining aesthetic appeal with durability.
- **Versatile Storage**  
Featuring both sideboard and tall cabinet styles, it offers ample and flexible storage options to meet diverse needs.



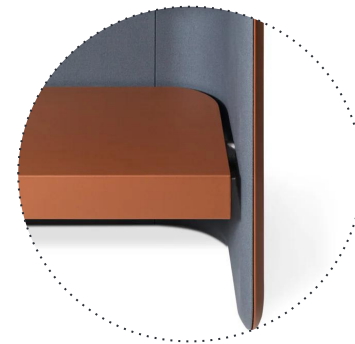


- **Cohesive Design**
  - Featuring an elegant diamond quilted texture and harmonious color palette, it creates a refined and coordinated visual appearance.
- **Textured Elegance**
  - Intricate diamond patterns add tactile depth and visual intrigue, elevating minimalist aesthetics with subtle detailing.
- **Premium Craftsmanship**
  - Crafted from high-quality soft materials with seamless edges and precise detailing, combining aesthetic appeal with durability.
- **Versatile Storage**
  - Featuring both sideboard and tall cabinet styles, it offers ample and flexible storage options to meet diverse needs.





- **Premium Craftsmanship**
- Crafted from high-quality soft materials with seamless edges and precise detailing, combining aesthetic appeal with durability.
- **Versatile Storage**
- Featuring both sideboard and tall cabinet styles, it offers ample and flexible storage options to meet diverse needs.



- **Cohesive Design**
- Featuring an elegant diamond quilted texture and harmonious color palette, it creates a refined and coordinated visual appearance.
- **Textured Elegance**
- Intricate diamond patterns add tactile depth and visual intrigue, elevating minimalist aesthetics with subtle detailing.



- **Luxury High-Gloss Lacquer Finish**

- Featuring a premium high-gloss black lacquer finish with exceptional luster and elegant light reflection, showcasing outstanding texture.

- **Storage that blends practicality and aesthetics**

- Combining open display with hidden storage in movable red storage boxes, it balances beauty and functionality.

- **Bold Color Contrast**

- The deep glossy black frame and vibrant red storage box create a striking visual impact, generating unforgettable artistic tension.

- **Sculptural Floating Design**

- The unique multi-layered contours and floating effect add a sense of lightness and modern artistic flair to the space.

- **A Modern Declaration of Luxury Artistry**

- More than just furniture, these are true works of art designed to become the visual focal point of an elegant living room or dining space.

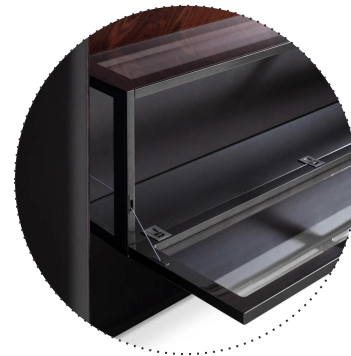




- **Premium Material Fusion**
- Expertly combines luxurious burl wood with sleek black metal accents for a sophisticated layered aesthetic.

- **Functional Artistry**
- Blends open display shelving and concealed storage, perfect for showcasing collectibles with practicality.

- **Exquisite Burl Wood Veneer**
- Stunning high-gloss finish with rich, dramatic grain patterns showcasing premium timber's natural beauty.
- **Fluid Curvilinear Form**
- Uniquely sculptural design with soft, flowing curves that define its elegant silhouette and add movement.



- **Statement of Refined Taste**
- More than storage, it's a subtle statement that elevates the ambiance of any contemporary living space.





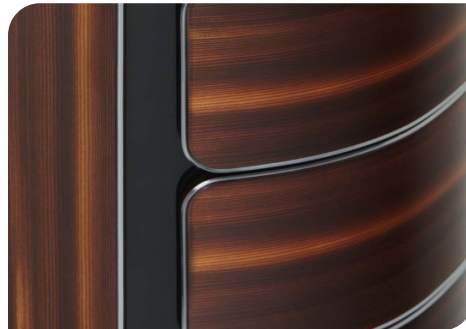
- **Superior Craftsmanship**
  - Seamless edge finishing, precision joinery, and solid wood cabinet legs showcase exceptional quality.
- **Statement of Refined Taste**
  - A design language of understated luxury elevates the overall style and ambiance of living spaces.

- **Timeless Elegance**
  - A minimalist rectangular silhouette embodies timeless design principles, seamlessly complementing any contemporary space.
- **Exquisite Material Fusion**
  - The high-gloss burl wood drawer fronts and matte body create a rich visual contrast of textures.





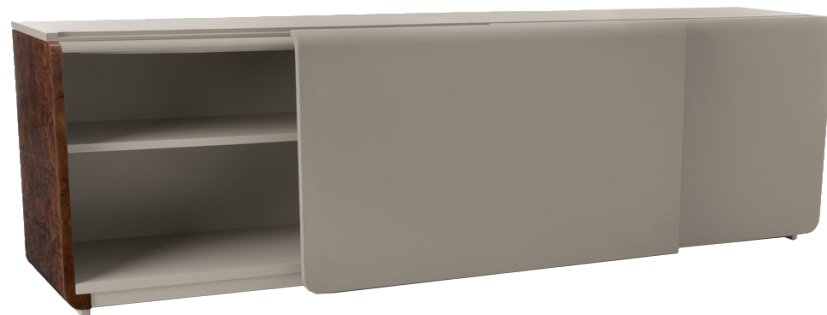
- **Sculptural Design**
  - Multi-layered forms intertwine with fluid curves, creating a dynamic and elegant visual focal point.
- **Luxurious Finish**
  - Premium dark wood veneer paired with a high-gloss finish perfectly reflects light, showcasing depth and quality.
- **Modern Luxury**
  - More than just furniture—a modern luxury artwork that elevates the ambiance of your bedroom.
- **Exquisite Craftsmanship**
  - Seamless connections between layers, with every detail embodying the ultimate pursuit of artistry and precision.
- **Functional Artistry**
  - The integrated drawer design offers ample storage space, combining aesthetics with practicality.





- **Functional Sophistication**
- Spacious concealed storage compartments with adjustable shelves combine practicality with the multifunctional demands of modern living.
- **Statement of Understated Elegance**
- Not merely furniture, but a statement of understated elegance, its refined minimalist design elevates the overall ambiance of any space.

- **Flexible Modular Design**
- A highly adaptable modular system that can be freely configured to suit spatial requirements, offering unparalleled flexibility.
- **Exquisite Material Fusion**
- The artful juxtaposition of matte lacquer and luxurious burl wood grain creates rich visual depth and textural contrast.
- **Clean Sliding Door Aesthetic**
- The minimalist sliding door design enhances the overall streamlined aesthetic while ensuring convenient storage.





**FENMI**  
**分米**

Tel:86-757-66886868    Email:[www.fenmicasa.com](http://www.fenmicasa.com)

---